



Alfa Laval SWS

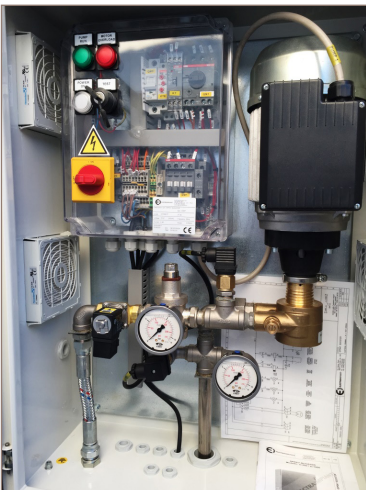
Spray Water System

General information & application

Alfa Laval SWS is a full spray water system, including pump and electrical cabinet, for air cooled condensers and liquid coolers. Air heat exchangers are normally selected to accomplish performance requirements in the hot season peaks. As a consequence, units are often oversized and thus more expensive. In such cases a spray water system can help in selecting correctly sized units. Benefits of increased global energy efficiency, sound reduction etc are now combined in a simple Alfa Laval solution.

Features

- Available in three sizes: 500 l/h, 1000 l/h, 2000 l/h to cover all air heat exchanger range needs
- Power supply 230 V/1 ph/50 Hz
- 6 bar pump
- Draining valve for complete water discharge
- Stainless steel piping with spray nozzles
- Application temperatures from +4 °C to +40 °C
- Protection Class IP55
- Switchboard with pump protection and signals (remote ON/OFF and fault alarm)
- Metal casing in painted galvanized steel (RAL9002) or stainless steel (optional).



Alfa Laval SWS - Spray Water System

Benefits

- Optimized heat exchanger selection
- Reduced footprint
- Reduced transport costs
- VDI 2047 Part 2 compliant
- Fully integrated with Alfa Laval control systems
- Energy saving

Integration with control systems

Alfa Laval SWS is perfectly integrated with Alfa Laval control solutions. ICM and master controller (PTec), can easily manage the complete spray water system. According to various parameters (such as pressure or temperature) the spray system is activated to increase capacity and face peak loads.

Selection

SWS spray water systems can be selected with Alfa Laval air heat exchanger selection software. A calculation sheet for detailed water flow calculation is available via the Alfa Laval sales organization.

Application

With standard aluminum fins, operating time of the spray water system is limited to 200 h/year. For longer usage periods and optimal corrosion resistance fin coating is advised. For details, contact your local Alfa Laval representative.

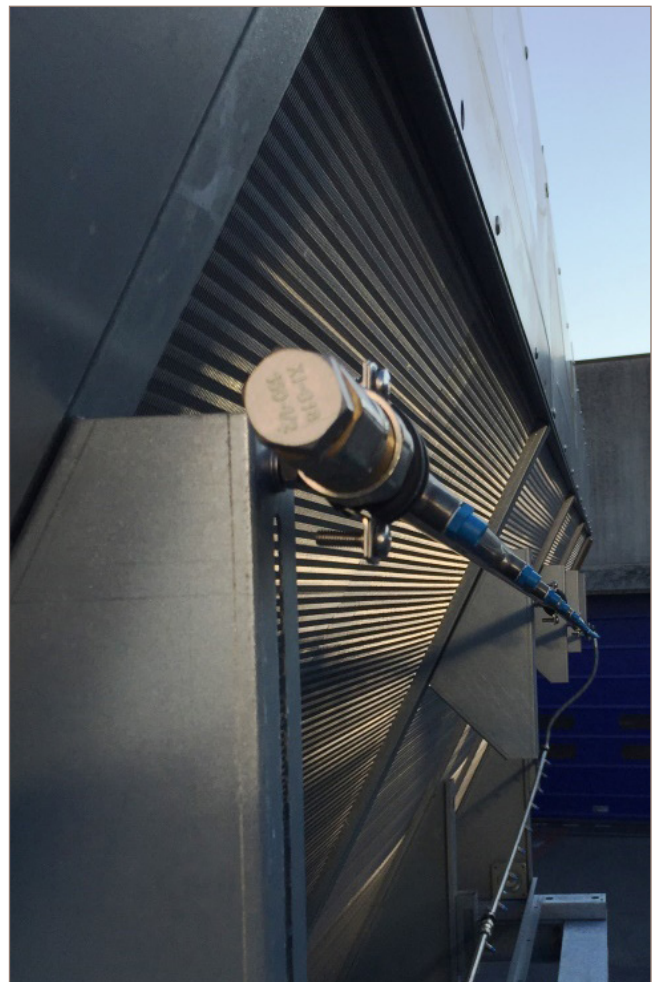
Water quality

Tap water (according to EC Directive 98/93) normally complies with the requirements for water quality as listed below.

- $6 < \text{pH} < 8$
- Conductivity $< 500 \mu\text{S}/\text{cm}$
- Chlorides $< 50 \text{ ppm}$
- Sulphates $< 50 \text{ ppm}$
- Hardness $2\text{--}4 \text{ }^\circ\text{f}$
- Total bacterial count $< 1,000 \text{ cfu}/\text{ml}$

Certification

The Alfa Laval quality system is in accordance with ISO 9001 and ISO 14001. All SWS spray water systems are manufactured according to CE regulations and VDI 2047 Part 2.



AHE00092EN 1703

Alfa Laval is a trademark registered and owned by Alfa Laval Corporate AB. Alfa Laval reserves the right to change specification without prior notification.

How to contact Alfa Laval

Up-to-date Alfa Laval contact details for all countries are always available on our website at www.alfalaval.com